



14 Harebell Close
Minster On Sea, Sheerness, ME12 3ER
Asking price £445,000

4 3 2 C

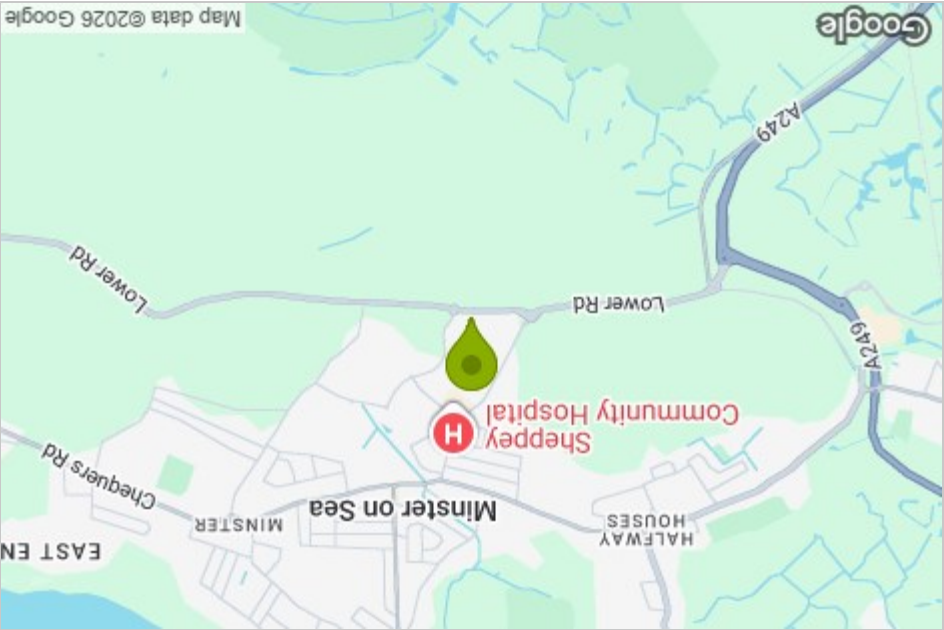


Floor Plan

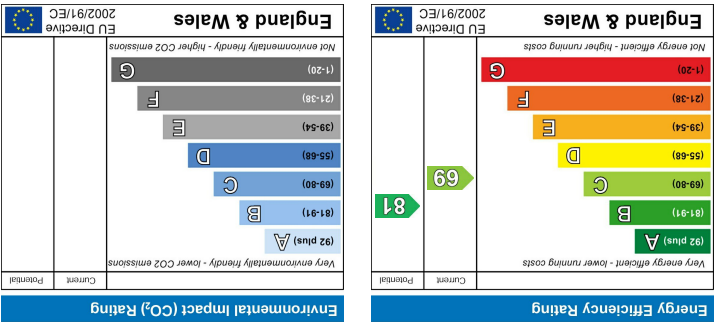


While every attempt has been made to ensure the accuracy of the floorplan contained herein, measurements of rooms, windows, doors and other items are approximate and no responsibility is taken for any error, omission or mis-statement. This plan is for illustrative purposes only and should be used as such by any prospective purchaser. The services, systems and appliances shown have not been tested and no guarantee is given as to their quality or reference can be given.

Area Map



Energy Efficiency Graph



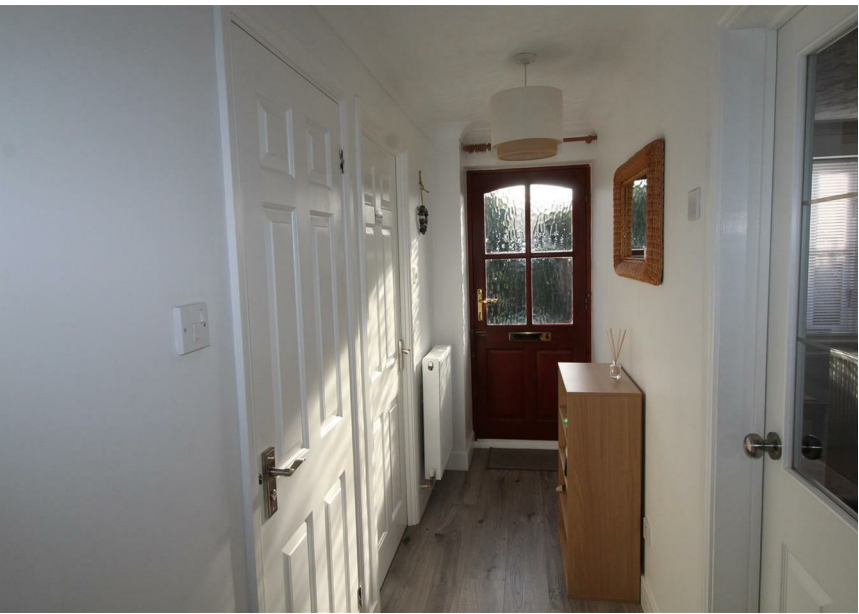
Viewing

Please contact our Isle of Sheppey Office on 01795 666 666 if you wish to arrange a viewing appointment for this property or require further information.

These particulars, whilst believed to be accurate are set out as a general outline only for guidance and do not constitute any part of an offer or contract. Intending purchasers should not rely on them as statements of representation of fact, but must satisfy themselves by inspection or otherwise as to their accuracy. No person in this firm's employment has the authority to make or give any representation or warranty in respect of the property.

James Perry
3 Broadway, Sheerness, Kent, ME12 1AB
Tel: 01795 666 666 Email: sales@james-perry.co.uk www.james-perry.co.uk

14 Harebell Close



- Large 4 Bedroom Detached House
- Great Sized Rear Garden
- Master Bedroom With En-Suite
- Study/Office Room
- Local To Schools And Amenities
- Double Garage with Parking
- Utility Room With Garden Access
- Very Spacious Studio
- Sought After Minster Prime Location
- Great Access To Major Road Networks

Description

£445,000 Asking
Harebell Close, Minster On Sea, Sheerness, this splendid four-bedroom detached house offers a perfect blend of comfort and convenience. The property boasts a spacious layout, ideal for families seeking a welcoming home.

Upon entering, you will be greeted by a generous living space that flows seamlessly into a well-appointed kitchen, perfect for both everyday living and entertaining guests. The house features a large studio, providing an excellent opportunity for a creative workspace or a playroom, alongside a dedicated study room that is perfect for those who work from home or require a quiet space for study and a separate utility room with extra storage.

The impressive garden is a standout feature of this property, offering ample outdoor space for children to play, gardening enthusiasts to thrive, or simply for enjoying the fresh air during the warmer months. The double garage provides not only secure parking but also additional storage options, catering to all your needs.

The upstairs has 4 bedrooms, 3 double bedrooms. The Master bedroom and bedroom 2 both have ensuite. There is also a generously sized family bathroom that has a lot of natural lighting.

Conveniently located, this home is within easy reach of local shops and schools, making it an ideal choice for families. The surrounding area is known for its friendly community and accessibility, ensuring that you have everything you need right at your doorstep.

In summary, this delightful detached house in Minster On Sea presents an exceptional opportunity for those looking for a spacious family home with a beautiful garden and ample amenities nearby. Don't miss the chance to make this wonderful property your own.

Minster On Sea, Sheerness, ME12 3ER

